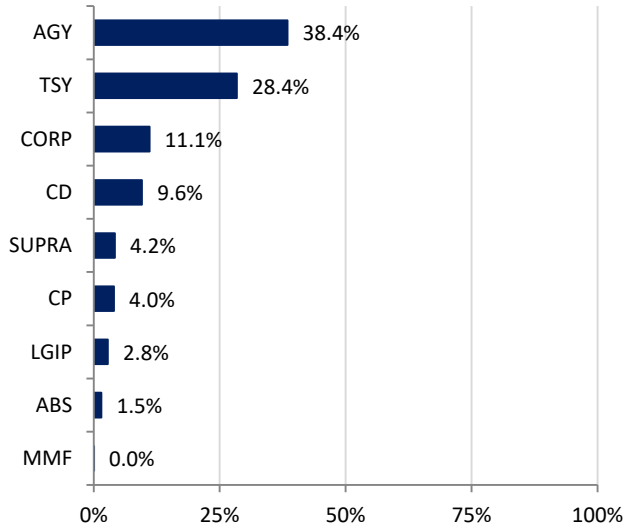
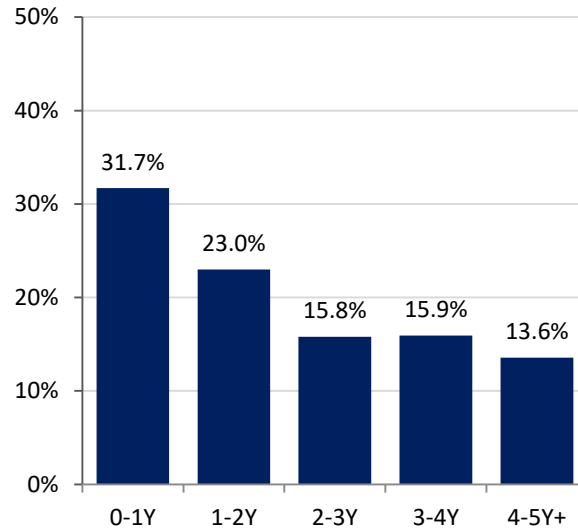


**Southern Nevada Water Authority
Portfolio Summary
As of
1/31/2022**

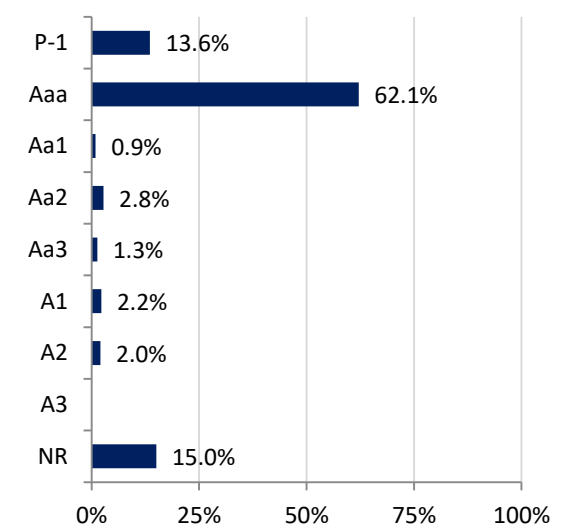
SECTOR ALLOCATION



MATURITY DISTRIBUTION



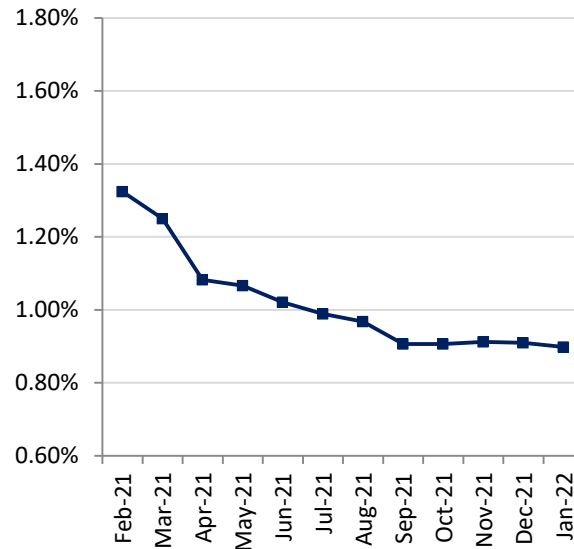
CREDIT QUALITY (MOODY'S)



ACCOUNT SUMMARY

	1/31/22	12/31/21
Market Value	\$970,828,421	\$954,838,155
Book Value	\$980,975,747	\$957,446,212
Variance	-\$10,147,327	-\$2,608,058
Par Value	\$980,823,290	\$957,218,131
Book Yield	0.90%	0.91%
Years to Maturity	2.04	2.16
Effective Duration	1.90	2.09
Earnings		
Current Month	\$737,077	
Fiscal YTD	\$5,226,343	

MONTH-END PORTFOLIO BOOK YIELD



ISSUERS OVER 5%*

Issuer	% Portfolio
U.S. Treasury	28.4%
FAMCA	10.7%
FFCB	7.8%
FNMA	7.4%
FHLMC	6.9%

*Issuers in portfolio that make up more than 5% of portfolio