

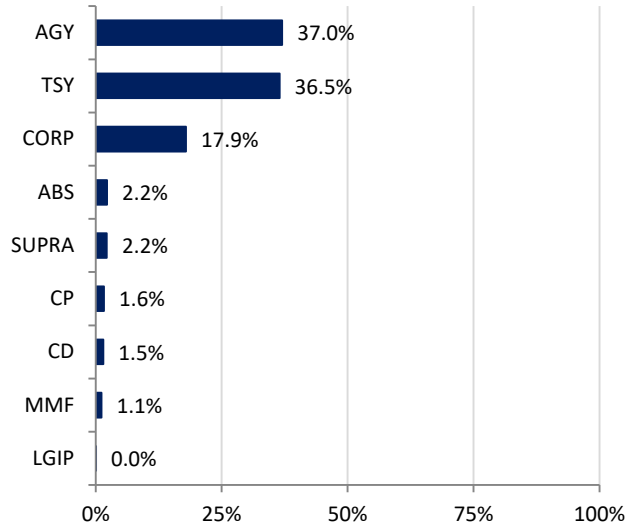


# Southern Nevada Water Authority

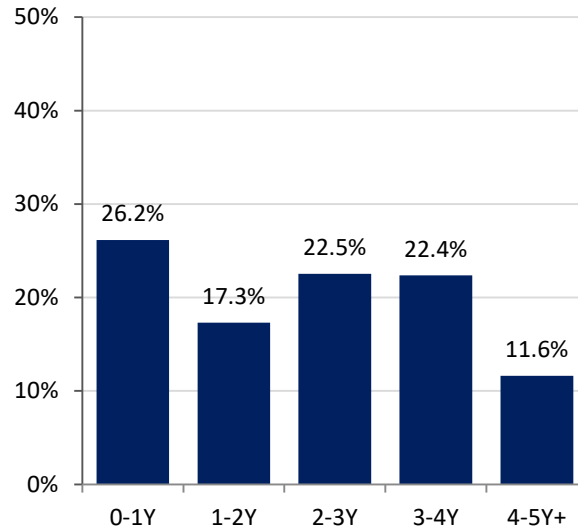
## Portfolio Summary

As of  
7/31/2023

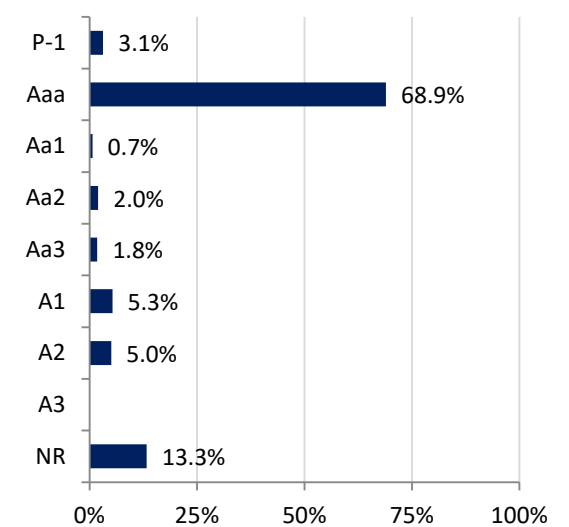
### SECTOR ALLOCATION



### MATURITY DISTRIBUTION



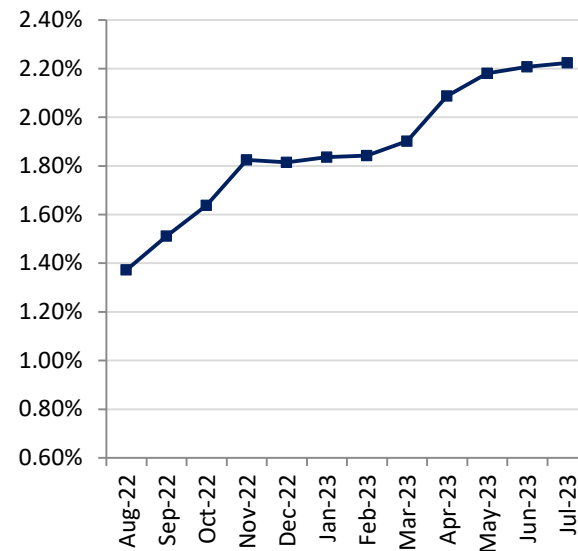
### CREDIT QUALITY (MOODY'S)



### ACCOUNT SUMMARY

	7/31/23	6/30/23
Market Value	\$1,292,452,214	\$1,290,622,707
Book Value	\$1,352,889,553	\$1,352,643,164
Variance	-\$60,437,339	-\$62,020,456
Par Value	\$1,365,469,950	\$1,365,348,779
Book Yield	2.22%	2.21%
Years to Maturity	2.32	2.45
Effective Duration	2.07	2.18
<b>Earnings</b>		
Current Month	\$2,649,716	
Fiscal YTD	\$2,649,716	

### MONTH-END PORTFOLIO BOOK YIELD



### ISSUERS OVER 5%\*

Issuer	% Portfolio
U.S. Treasury	36.5%
FAMCA	11.0%
FHLB	10.3%
FFCB	6.2%

\*Issuers in portfolio that make up more than 5% of portfolio