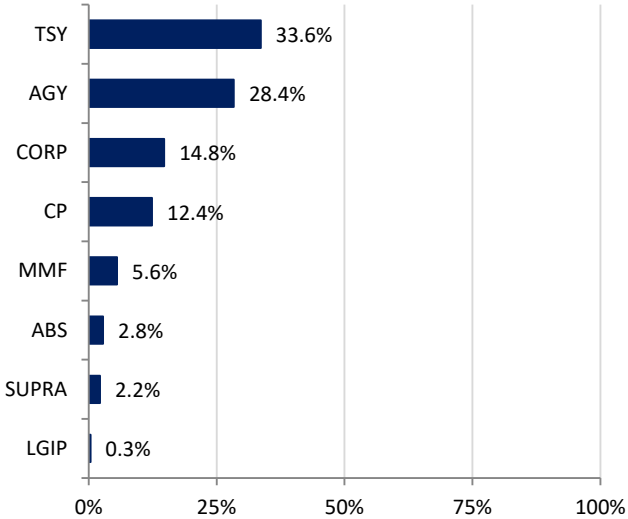
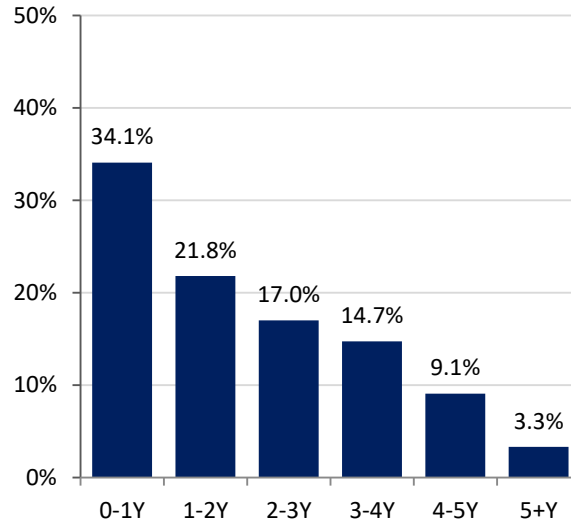


**Southern Nevada Water Authority  
Portfolio Summary  
As of  
11/30/2024**

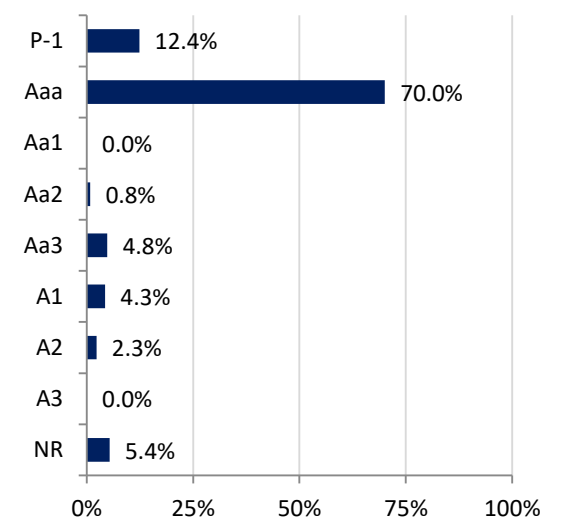
**SECTOR ALLOCATION**



**MATURITY DISTRIBUTION**



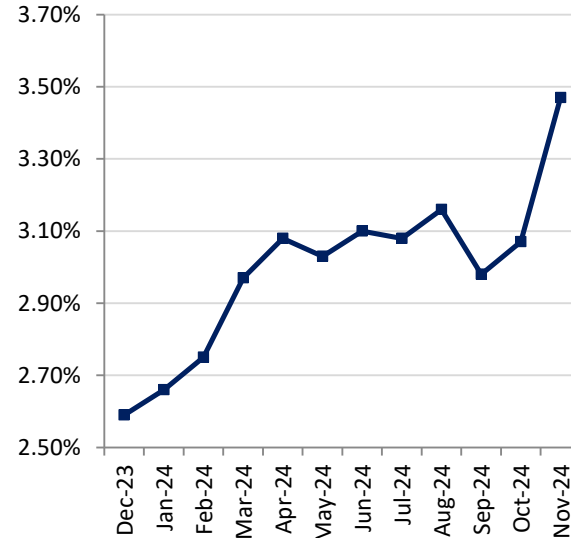
**CREDIT QUALITY (MOODY'S)**



**ACCOUNT SUMMARY**

	11/30/24	10/31/24
<b>Market Value</b>	\$1,453,050,530	\$1,472,328,049
<b>Book Value</b>	\$1,468,628,030	\$1,490,578,550
<b>Variance</b>	-\$15,577,499	-\$18,250,501
<b>Par Value</b>	\$1,485,382,273	\$1,506,779,167
<b>Book Yield</b>	3.47%	3.07%
<b>Years to Maturity</b>	2.08	2.16
<b>Effective Duration</b>	1.89	1.91
<b>Earnings</b>		
<b>Current Month</b>	\$3,043,686	
<b>Fiscal YTD</b>	\$18,621,271	

**MONTH-END PORTFOLIO BOOK YIELD**



**ISSUERS OVER 5%\***

Issuer	% Portfolio
U.S. Treasury	33.6%
FHLB	7.2%
FFCB	6.0%
FAMCA	5.7%

\*Issuers in portfolio that make up more than 5% of portfolio