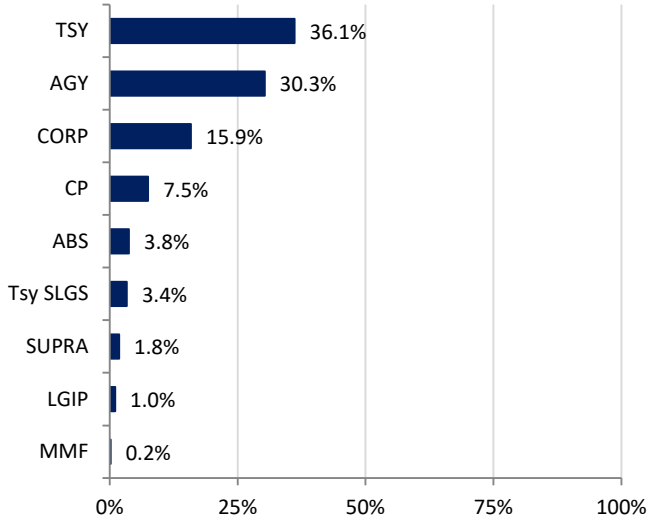
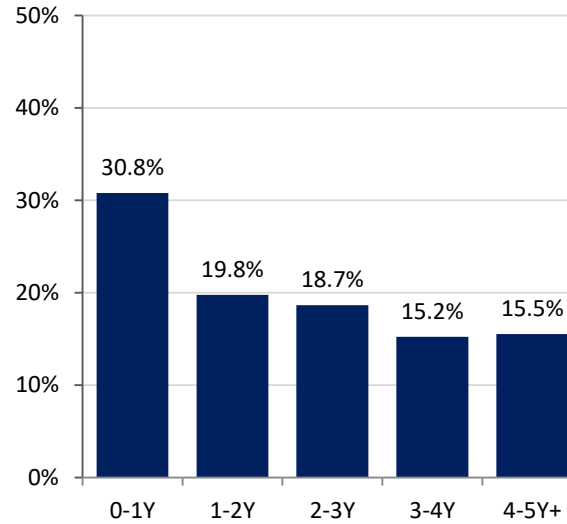


**Southern Nevada Water Authority  
Portfolio Summary  
As of  
10/31/2024**

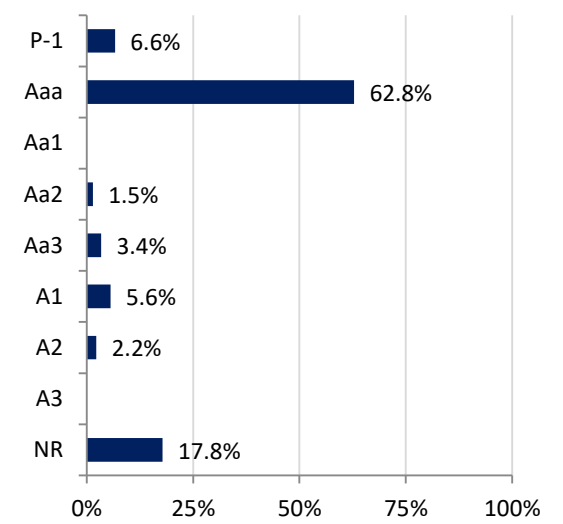
**SECTOR ALLOCATION**



**MATURITY DISTRIBUTION**



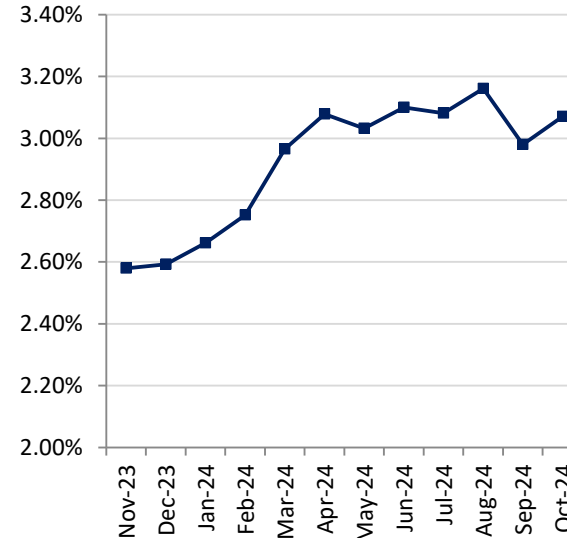
**CREDIT QUALITY (MOODY'S)**



**ACCOUNT SUMMARY**

	10/31/24	9/30/24
<b>Market Value</b>	\$1,472,328,049	\$1,479,760,342
<b>Book Value</b>	\$1,490,578,550	\$1,485,110,274
<b>Variance</b>	-\$18,250,501	-\$5,349,932
<b>Par Value</b>	\$1,506,779,167	\$1,502,420,544
<b>Book Yield</b>	3.07%	2.98%
<b>Years to Maturity</b>	2.16	2.13
<b>Effective Duration</b>	1.91	1.85
<b>Earnings</b>		
<b>Current Month</b>	\$3,931,077	
<b>Fiscal YTD</b>	\$15,432,838	

**MONTH-END PORTFOLIO BOOK YIELD**



**ISSUERS OVER 5%\***

Issuer	% Portfolio
U.S. Treasury	36.1%
FAMCA	7.9%
FHLB	7.1%
FFCB	5.9%

\*Issuers in portfolio that make up more than 5% of portfolio