

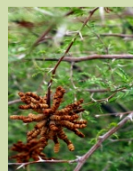
# Las Vegas Wash Coordination Committee: Celebrating 20 Years of Accomplishments

October 9, 2018

Las Vegas Wash



[www.lvwash.org](http://www.lvwash.org)



# Las Vegas Wash Coordination Committee

- Mission: working to stabilize and enhance the valuable environmental resources of the Las Vegas Wash
- Assisted by three study teams: Admin, REM and Ops with LVVWAC oversight



# Resources Invested

- Invested substantial time and resources in the Wash:
  - Held 100s of stakeholder meetings
  - Spent ~\$150M on Wash CIP & ~\$40M on other programs
    - Local agencies contributed >\$20M
    - Received >\$75M in federal grants & >\$1M in NDEP grants





# CAMP Progress at 20 Years



- All 44 action items implemented:
  - 31 complete or addressed by others
  - 13 ongoing, perpetual



# Stabilization

- Constructed 21 weirs and ~13 miles of bank protection
  - Capital construction complete
- In 2018 alone:
  - Completed Tropicana, Historic Lateral and Sunrise Mountain weirs
  - Reconstructed Monson and Visitor Center weirs
  - Assessed current condition of erosion control structures and impacts of vegetation





# Water Quality

- Monitored WQ in Wash and tributaries since 2000
- Reduced TSS ~60%; Wash removed from 303(d) list of impaired waters
- Reduced nutrients and trace metals
- Created comprehensive database
- Real-time monitoring provides valuable data, especially during storms
- Shallow GW data helped pinpoint perchlorate sources and changes due to remediation, dropping from ~140ppb in 2005 to ~25ppb in July 2018 at LW0.8



# Bioassessment Monitoring

- Implemented four rounds of bioassessment monitoring, sampling water, sediment, fish, and bird eggs
- A limited number of COPCs exceeded LOCs, but no urgent risks or threats to aquatic wildlife were found in the Wash and its tributaries
- Additional sediment sampling in 2018 showed reduced trace metals and completes commitment to USFWS



# Wetland Demonstration Projects

- COH WRF project (2001-2009) - proved treated municipal wastewater quality can be improved while also creating habitat for >100 bird species
- Pittman Wash pilot project (2005-2009) - showed Olney bulrush had potential value for selenium and nitrogen uptake
- In-Lieu Fee Mitigation Wetlands (2009-present) - met Corps requirements, closed permit and identified two Yuma Ridgway's rails using habitat





# Wildlife

- Conducted >10 baseline surveys, now conducting follow-ups
- Developed and implemented wildlife mgt plan; Approved 2008
  - 10 years in, 94% of recommended actions have been implemented
- Surveyed for threatened and endangered species for ESA compliance
  - Detected yellow-billed cuckoo, southwestern willow flycatcher and Yuma Ridgway's rail
  - Documented desert tortoise



# Vegetation Enhancement & Management

- Revegetated >515 acres with native plants
  - 140 acres are wetlands, >80 acres over the required Corps mitigation
- Reduced tamarisk by 95%, from ~1,500 acres to <65 acres
- Removed >90% of giant reed and treated tall whitetop extensively





# Cultural Resources

- >40 sites; 28 eligible for National Register listing
- Only evidence for Paleoindian (>12,000 years) activity in valley
- 2 of just 4 identified prehistoric pithouses in valley (Three Kids, Larder sites)
- Oldest recorded date for maize (Larder Site,  $\approx$  350 BC)
- Excavated and reconstructed early-20<sup>th</sup> century cellar





# Education & Outreach

- Developed and implemented outreach plan
- Attended or hosted >660 events
- Reached >250,000 people
- Held >115 events with Mabel Hoggard Elementary students
- Hosted 32 Green-Ups with ~12k volunteers; 33<sup>rd</sup> event scheduled for Saturday



# Data Resources

- Hosted average of ~1,880 unique visitors/month to lvwash.org for >450,000 visits
- Delivered 156 monthly program updates to >400 subscribers
- Launched Facebook page; >800 followers
- Implemented and maintained WQ database:
  - 3.7M lines of data
  - >137,000 new entries/year
  - 12 participating agencies, 43 projects
  - 708 site locations, >900 parameters





# Before/After – Pabco South

2000



2001



2017





# Before/After - Bostick South

2000



2005



2017





# Before/After – Calico Ridge North

2003



2005



2017





# Before/After – Lower Narrows South

2005



2012



2017





# Long-term Operations

- Engineering study wrapping up and last weir completed
  - ~2 years for revegetation
- Draft Long-term Operating Plan contains 37 actions to continue work of implementing CAMP into perpetuity



Congratulations on 20 Years!!!  
Time for cake, cider and  
photobooks!

